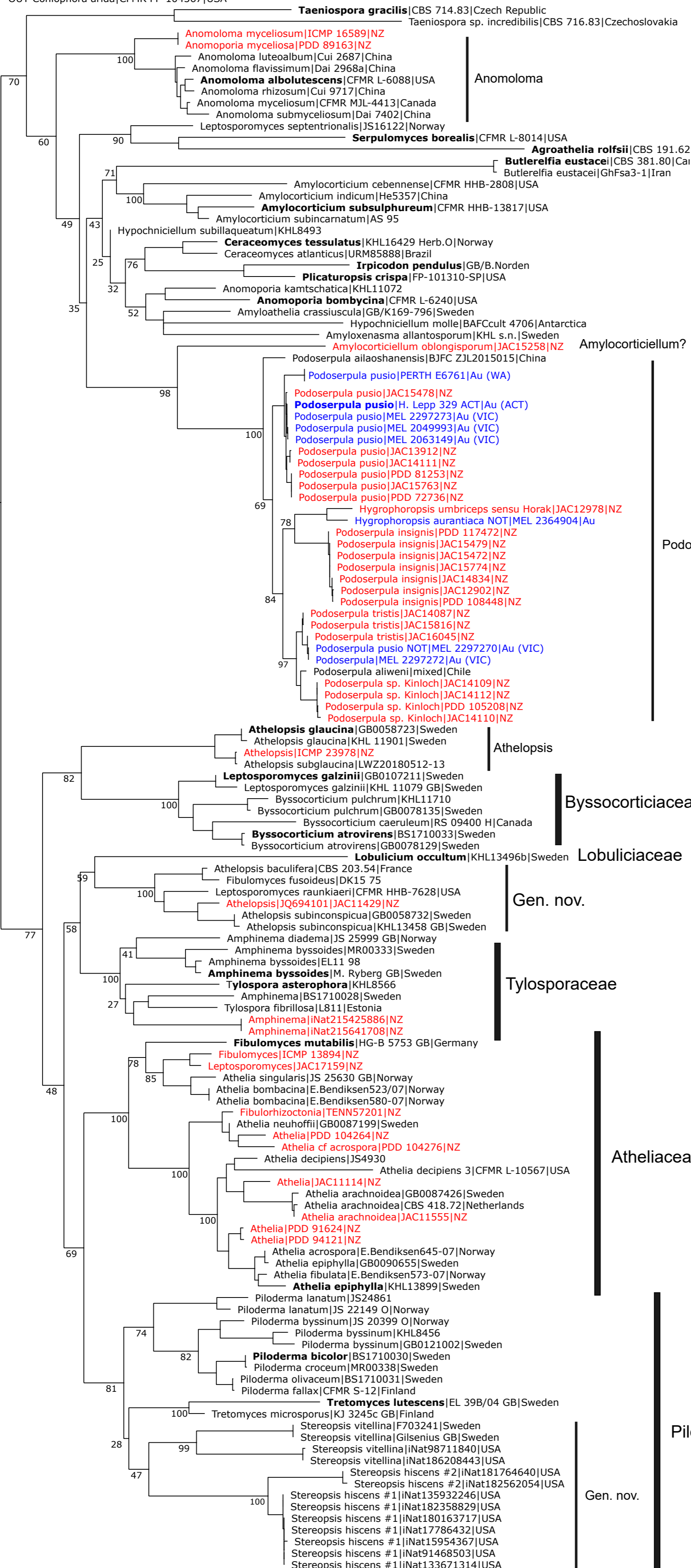


Atheliales + Amylocorticiales

Jerry Cooper Oct 2024

ITS+LSU+RPB2+Tef

OUT-Coniophora arida|CFMR FP-104367|USA



Amylocorticiales

Amylocorticaceae

Podoserpula

Athelopsis

Byssocorticaceae

Lobuliciaceae

Gen. nov.

Tylosporaceae

Atheliales

Atheliaceae

Pilodermataceae

Gen. nov.

0.09