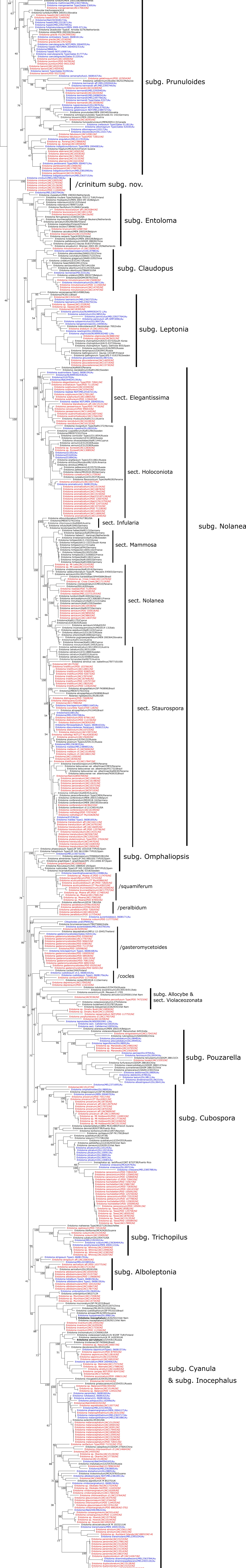


Entoloma

ITS+LSU+mtSSU+RPB2+Tef

Jerry Cooper, Feb. 2026



subg. Prunuloides

c. crinitum subg. nov.

subg. Entoloma

subg. Claudonia

subg. Leptonia

sect. Elegantissima

sect. Holoconota

sect. Infularia

subg. Nolanea

sect. Mammosa

sect. Nolanea

sect. Staurospora

subg. Omphaliopsis

/squamiferum

/peralbidum

/gasteromycetoides

/cocles

subg. Allocybe & sect. Violaceozonata

subg. Pouzarella

subg. Cubosporea

subg. Trichopilus

subg. Alboleptonia

subg. Cyanula & subg. Inocephalus

subg. Trichopilus

subg. Alboleptonia

subg. Cyanula & subg. Inocephalus

subg. Trichopilus

subg. Alboleptonia

subg. Cyanula & subg. Inocephalus